

MEP January 2025 Report



Elephant Edwin stopped by MEP headquarters in January to show off his latest accessory – a brand-new Savannah Tracking satellite collar. He was collared in November to effectively respond to his bold crop raiding behavior.

GENERAL



In January, 15 Mara Elephant Project (MEP) rangers completed an advanced drone operations refresher training at headquarters. Held annually, this training builds the capacity of MEP's licensed drone pilots to adapt to ever changing field operations. The program, led by Expert Drones Africa (EDA), keeps rangers at the forefront of conservation innovation to strengthen their efforts to secure a future for elephants and the communities that share the Mara's iconic landscape.

SECURITY, ANTI-POACHING & CONFLICT



On January 7, MEP assisted Kenya Wildlife Service (KWS) Vet Dr. Michael Njoroge from the Sheldrick Wildlife Trust (SWT) Mobile Vet Unit with two wildlife treatments. The

first, a female elephant with a spear injury on her leg. The vet cleaned the wound, administered antibiotics and recorded a positive prognosis. The second, a male juvenile zebra with a bushmeat snare around his neck. After removing the snare, the vet team cleaned the wound and treated him with antibiotics and anti-inflammatories. Both animals quickly joined their respective herds, and the MEP team will monitor the treated elephant during their regular patrols.

Similarly, in January, MEP's "Foxtrot" ranger team and the long-term monitoring (LTM) team assisted KWS Vet Dr. Njoroge from the SWT Mobile Vet Unit to treat a juvenile female elephant in Enoonkishu Conservancy that was suffering from a spear injury on her left hock. The team treated her, cleaning the wound, administering antibiotics and anti-inflammatories, and MEP rangers will continue monitoring her as she recovers.



KWS has been monitoring Lempiris jointly with the Wildlife Research and Training Institute (WRTI) and MEP since 2017. His continuous movement data has demonstrated the loss of connectivity between conservancies east of the Maasai Mara National Reserve and the Loita Forest. It's also informed MEP ranger patrol targets in the area and identified hot spots for conflict surrounding the conservancies. Given his importance, Lempiris was fitted

with a new Savannah Tracking satellite collar on January 14 with support from KWS Vet Dr. Njoroge to continue his tracking for another three years.

Overall in January, MEP rangers alongside government partners arrested 59 habitat destruction suspects and removed 14 snares. They also confiscated 320 pieces of timber, 1,579 posts and five power saws, and destroyed 35 charcoal kilns and 153 charcoal sacks, and mitigated 38 conflict incidents. They also provided a lift for school children when elephants were nearby. In January, MEP rangers covered a distance of 1,010 km on foot and 11,691 km in a vehicle in the GME.



HELICOPTER

January 2025 saw the MEP helicopter play a crucial role in operations, supporting collaring efforts, medical treatments, and guiding elephant herds away from community settlements. It remains an essential asset in our conservation work.

The MEP helicopter in action during an elephant treatment



DRONES FOR CONSERVATION Special Projects Manager's Update



January was a particularly busy month with drone pilots responding to a rise in human-elephant conflict incidents. During this period, there was a notable increase in elephant-related incidents, especially

cases of elephants breaking fences and going into community settlements.

The MEP 'Mobile' and 'Golf' ranger teams were actively engaged in conflict mitigation efforts, responding to tensions in the Loita Hills, Ol-Kinyei and Kawai areas. Numerous reports of human-elephant conflict incidents were reported, and the rangers deployed their drones to minimize

crop damage and ease tensions. The teams also used their drones to monitor collared elephants in their respective areas.

The MEP 'Lima' ranger team deployed their drone to respond to conflict and they also monitored a big herd in the Mosiro area. With the cattle counts continuing in the month of January, we managed to cover a total of 86 bomas and we are happy to report that the Mara North Conservancy count has been completed.



COMMUNICATIONS & FUNDRAISING



In January, MEP welcomed Trustees to the HQ for a two-day strategy health check. The sessions facilitated by a consultant Sunny Bindra from Sunwords provided an engaging platform for MEP's leadership to collaborate and refine the organization's strategic approach.

Mara Elephant Project Trust in Kenya received \$59,231 in donations in January. Thank you to the Basecamp Explorer Foundation–Kenya and Kampur Travel Diaries for renewing their support for the Training of Trainers and educational activities respectively.

Mara Elephant Project USA received \$234,886 towards the support of MEP's conservation efforts. Thank you to Maxine Beige, Carolyn Shine, Margy and Mike McCormick, Marcy Mackinnon and Robert Stephen for renewing their annual support. A special thanks to stakeholders David Stulb and Lisa Konieczka for their support. We are also excited to have the support of Honeyguide Safaris, John Walsh, Mary MacGuire, Judith Bradford, Radford Klotz, Jacquelyn Sorby, Edward Forstein, Patricia McBryde, Roby Odom, James & Barbara Syverud, Nikhil Jaisinghani, Roger Pasarow, Helena Van Dierendonck, Piacentini Fund, Patricia Sovern, Carol Lynn Beck, Michael Burke, James & Robin Leckinger, Barbara Berman, Linda Boyle, Deborah Brown, Jeffrey Dennis, Ellen Eckman, Mary Ann Evans, James Greener, Surendra Gupta, John Halsey, Louise Ladd-Whitson, Kenneth Martin, Mary Martin-Falanga, Lynn Morrison, Thomas Norwood, Jerry Olson, Peggy Shekem, Pamela Stallings, Thomas Thorfinnson, Laurence Winokur, and Marie Woodward.

COMMUNITY & OUTREACH



Dibblex and the House in the Wild team.

During the month of January, MEP's Community Outreach Coordinator visited Fairmont Mara Safari Club and House in the Wild camps to strengthen MEP's relationships with camp partners. MEP's outreach strategy involves both camp partners and stakeholders across the landscape and part of our objective is to expand these partnerships to further our elephant conservation efforts.

Also, in January, MEP hosted Tatianna Vollant from I Feel Good Foundation (IFG) at the MEP headquarters. Tatiana visited to conduct a due diligence on MEP's operations particularly the conservation education program.



RESEARCH & CONSERVATION

Deputy Director's Update

During the month of January, the Deputy Director of Research & Conservation (DDRC) developed the research department 2025 work plan. The first quarter of the USAID-MMWCA Conservation of the Maasai Mara Landscape (CMML) grant report was finalized and shared with Maasai Mara Wildlife Conservancies Association (MMWCA) and going forward, all the activities have ceased given the uncertainties surrounding USAID funding.

Long Term Monitoring (LTM) Team



During the month of January, the team went ahead conducting three long term monitoring experience visits including meeting a volunteer group from the Wildlife Tourism College (WTC). Thirty-eight sightings were conducted consisting of 39 bulls, 80 cows, 49 sub-adults and 17 calves. These sightings included four collared subjects identified as Kevin, monitored at Maasai Mara National Reserve, Ivy, Edwin and Fred at Mara North and Lemek

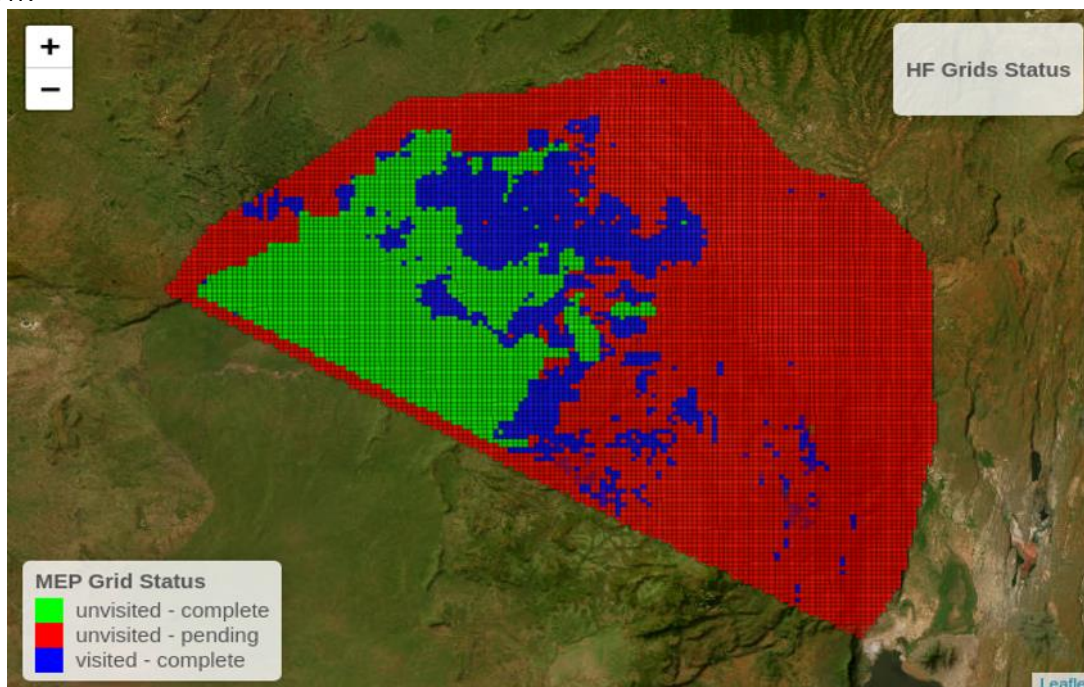
conservancies. Three new individuals were identified and added to the ElephantBook database during the process of data entry.

Data and Reporting Team

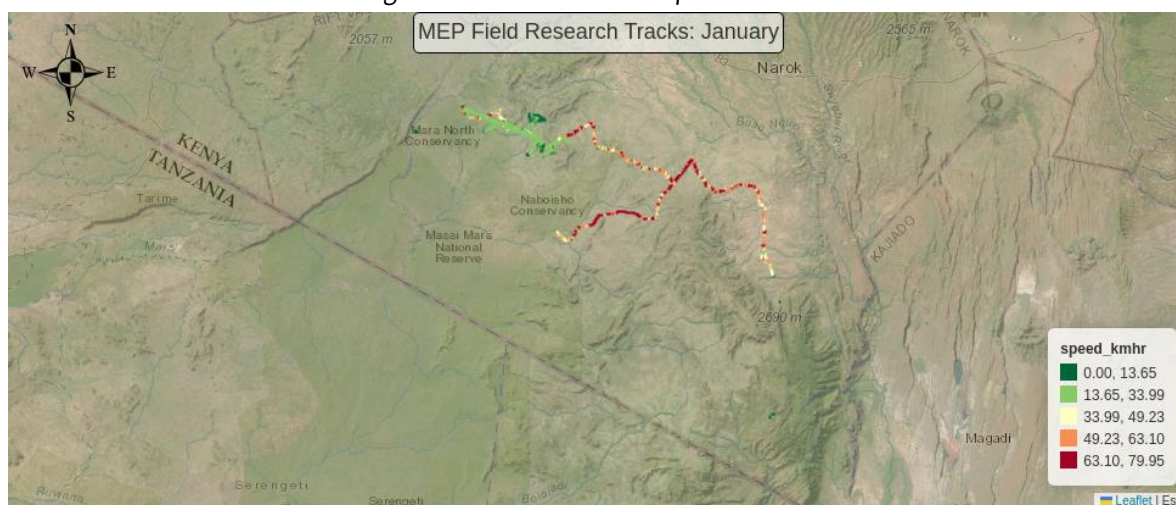
In January, we generated a collared subject report covering data from 2011 to 2024, incorporating updates on newly deployed collars in 2024 and those that became inactive. The insights gained will guide our strategic planning for upcoming reports and conservation actions.

Geospatial Mapping

This month, nine grids were visited and completed, and Field Assistant Milton marked a significant number of roads and physical features. He was also able to map 10.50 km of fences. The head of LandDx Data Eugene Kuloba summarized this month's data as depicted in the image below.



Nine grids were visited and completed this month.



Movements of MEP's one field assistant in January. All of our field assistants are working on mapping fences, roads, and landcover ground-truthing points using motorbikes and our TerraChart app. They covered a total of 940 km and recorded 10.5km of fences and 0 LCC points in January.

MEP Co-Existence Farm

General Update

The commencement of the month was characterized with dry days, while in last two weeks high rainfall was experienced. Last month rains supported growth of all types of weeds which competed highly with the main crops for water and nutrients, due to efforts and dedication of the team, the farm cleanness was maintained. A total of 34 kilograms of chili was harvested.



January was also marked with a visit by Peter Lokitela and the entire research team to meet the selected farmers for the out-growers program to discuss plans for planting the researched non-palatable crops in 2025. The community showed a positive response, marking an important milestone towards collaboration. The farmers were assured of MEP's support to provide seedlings and educating them on crop management, coexistence and entrepreneurship as we focus to empower the community in conservation and livelihoods improvement.

The preparation of the conservation education program for the 2025 is underway. Thanks to renewed support from Kampur Travel Diaries, it begun with a visit to the two kitchen gardens at Emarti and Enkipai primary schools. This year, there is a plan to continue with maintenance and support for the two school gardens with plans to establish a new one at one of the 12 schools that we will be working with. Five additional schools will be included in this year's program, which will represent all of MEP's operational areas to foster awareness and mentor conservation ambassadors.



Figure 1,2,3&4 Citriodora, Chili, Rosemary and Tea tree doing well.

Climate Report

MEP's Co-Existence Farm Rainfall Recording January 2025

Date	Rain gauge [20m2]
10-01-2025	9.9
11-01-2025	4.9
13-01-2025	13.2
22-01-2025	13.1
23-01-2025	5.5
24-01-2025	8
25-01-2025	1
26-01-2025	30
27-01-2025	29
28-01-2025	2.2
29-01-2025	16
30-01-2025	2.1
31-01-2025	17

Tracking Manager Report

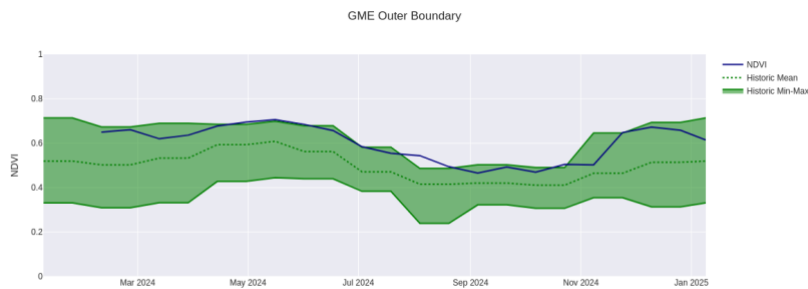


Collared elephants Edwin, Fred, Kevin, and Lempiris all monitored in January.

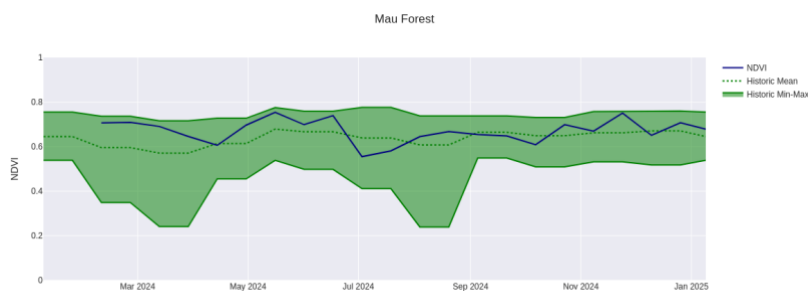
ENVIRONMENT: NDVI

Normalized Difference Vegetation Index (NDVI) is a measure of plant photosynthetic activity. Higher NDVI indicates the plant is greener. The blue trend line shows the current value while the green shaded area shows the min-max range of values centered around the green trend line from values measured back to February 2000.

Greater Mara Ecosystem (GME)

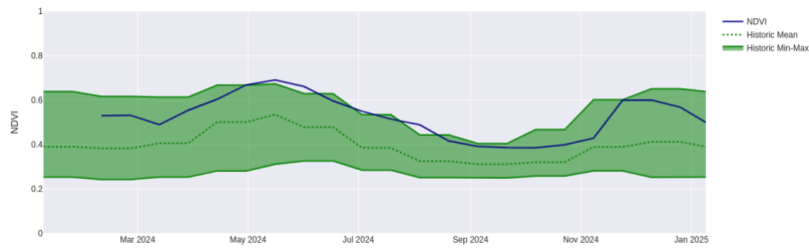


Mau Forest



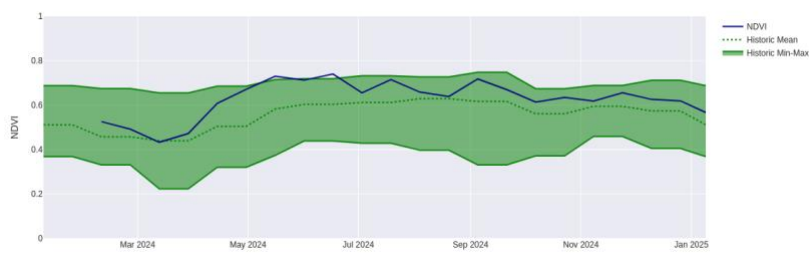
Rift Valley / Mosiro

Rift / Mosiro



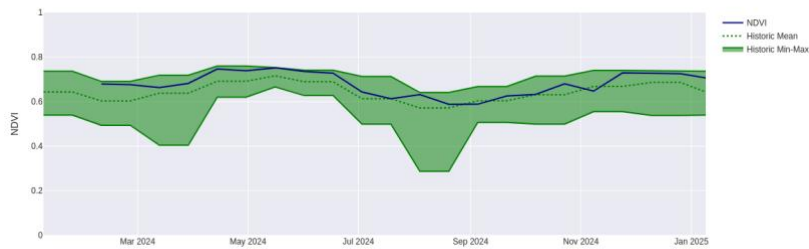
Marmanet Forest

Marmanet Forest



Nyakweri Forest

Nyakweri



Loita Forest

Loita Forest

