

MEP August 2019 Report



MEP Co-Founder Richard Roberts.

GENERAL

This month we lost Richard Roberts to brain cancer. Richard fought this terrible disease for the last two years. He was so strong and positive it is still hard to believe that he is gone. Everyone at the MEP family will miss him so much. Please read below the statement from Mara Elephant Project Board of Trustees Chairman Colin Church.

“The Mara Elephant Project suffered a great loss on August 18 with the death of our co-founder and trustee Richard Roberts. Richard was a conservation giant of his generation. He was a true son of the greater Mara region where he spent his earliest life and fought for its best future all his life – sadly snatched too early from us all. He believed with utmost passion and total focus that in the Mara all of its wide community should benefit from its unique environment. He believed that the people of the Mara were the guardians of one of the greatest wildlife spectacles on Earth. The MEP Board of Trustees conveys our deepest sympathy to Liz, Willoughby, Ivy and the wider Roberts family at this time of great bereavement and sadness. A visionary son of Africa has been taken from us all too soon.”

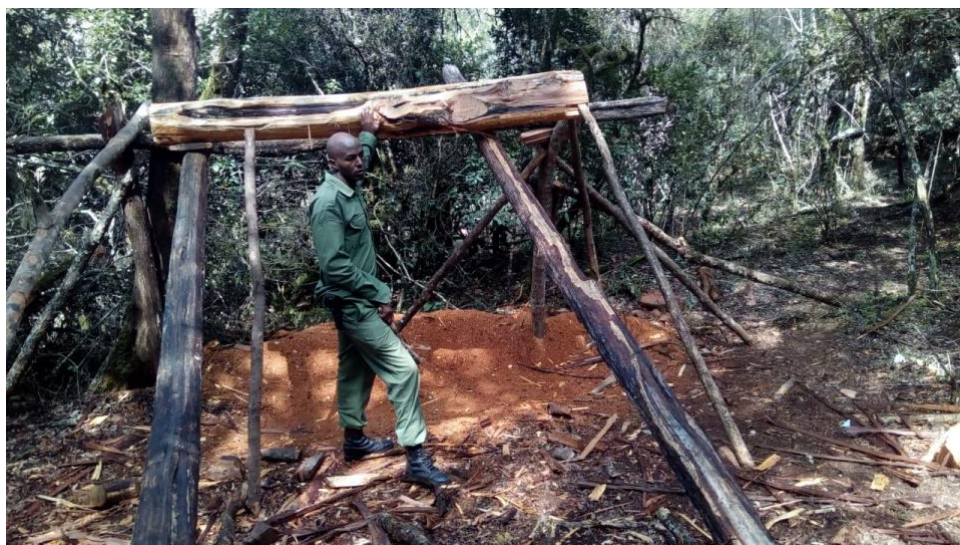
SECURITY & ANTI-POACHING

The Sheldrick Wildlife Trust (SWT) has just agreed to fund a second team in the Mau Forest to conduct anti-poaching patrols! This will increase our area of coverage in the Mau, which is in need of more protection. We expect to operationalize this team before the end of this year.

Around one year ago we sent a mobile team into the hills around Naarosora and they successfully stopped the illegal logging of pencil cedar in the area. Their presence meant that illegal logging quieted down for the rest of the year and we were able to move into the Loita Forest to protect elephants in that area. But this month we returned to Naarosora and found a huge number of cedar trees cut down to fashion 4,600 fence posts. We started recovering these posts with the Kenya Wildlife Service. We will keep up our patrols in the Loita Hills.



Loita team recovered 1,000 pieces of cedar posts in Naroosura Olokeri area. Waiting to be transported to KWS HQ.



Illegal logging operation found in the Loita Hills.



**Protecting elephants to conserve the greater
Mara ecosystem**

www.maraelephantproject.org

The August Situation Report really highlights the above mention of illegal logging and the need for further protection in areas like the Mau, Loita and Nyakweri. MEP rangers recovered 6,200 cedar posts during the month of August alone. They also destroyed three kilns and seven sacks of charcoal, made one arrest of two suspects transporting charcoal and removed two snares.



*Donkeys hauling charcoal out of the
Mau Forest.*



Kilns destroyed in August.



**Protecting elephants to conserve the greater
Mara ecosystem**

www.maraelephantproject.org

There were 11 human-elephant conflict incidents that MEP rangers responded to during the month of August. All incidents were responded to using vehicles, firecrackers, chili powder pods or in extreme cases, the Karen Blixen Camp Trust helicopter.



Crop damage in August.



*A MEP ranger assessing a damaged fence
during a night human-elephant conflict
mitigation response.*



The wildebeest are out in full force in the Mara with the great migration at its height. This is pushing elephants to move less up and down the escarpment.

Ranger & Vehicle Tracking:

In August, MEP rangers covered a distance of 1,562 km on foot, 9,108 km by car and 564 km on motorbike. The Loita team covered the largest distance on foot this month at 303 km from their patrol in Naroosura Forest.



A MEP ranger camp in August.

Helicopter:

The helicopter will get its first 100-hour service in early in September. It was very helpful this month in accessing difficult locations like the Mau, Sand River and Loita. Adam Bannister came to MEP HQ and got some amazing shots of the helicopter as we pushed Fred back across the Mara River from a conflict area.



An amazing shot by Adam Bannister from Angama Foundation.

COMMUNICATIONS & FUNDRAISING

It was a busy month for elephants in general with the CITES COP18 meeting in Switzerland taking place the last two weeks of August. Kenya took a strong stance in opposition of other African nations that all ivory stockpiles should be heavily regulated by CITES and not sold on the open market. Also rejected was the proposal to downgrade elephant from Appendix 1 to Appendix 2 to allow countries like South Africa to sell raw ivory for commercial purposes. This would have directly undermined Kenya's stance that all of the ivory markets around the world should be closed. MEP can safely say that Kenya's strong stance on not allowing elephants to be downgraded from Appendix 1 or reopening ivory markets previously closed will ensure this species continues to survive and thrive in Kenya.

MEP celebrated World Elephant Day on August 12 and combined with World Ranger Day on July 31 we raised over \$12,500 in support of MEP rangers and helicopter flying time. Thank you to everyone else who supported MEP in August, where we had a total of \$18,000 in donations from individuals. Thank you to Frani for celebrating her birthday by supporting MEP on Facebook. The second quarter newsletter was released in August, if you missed it, read [here](#). The direct mail campaign that Mara Elephant Project began in March will continue into 2019 in hopes of raising more money for core operations.



Protecting elephants to conserve the greater
Mara ecosystem

www.maraelephantproject.org

MEP hosted journalist Roberta Stanley at MEP HQ for two days to cover Mara Elephant Project operations and interview Director of Research and Conservation Dr. Jake Wall. Mark Fitzsimmons visited MEP HQ and took some amazing photos during his time at MEP. He's running a fundraiser to support MEP, learn more [here](#). MEP hosted a group from Karen Blixen Camp in August and had the pleasure of hosting Nicky Fitzgerald the owner of Angama Mara.



An elephant photo by Mark Fitzsimmons supporting MEP.

The Indianapolis Zoo supported the protection of an elephant in the Mau Forest for two years and wrote a wonderful blog about why it's vital for them to partner with organizations like MEP, you can read it [here](#). The Angama Foundation also supported the protection of an elephant for three years and wrote about their experience on the collaring operation [here](#). The Greatest Maasai Mara photo competition continues to impress in August with many entries benefiting MEP. Thank you to Fernando Morales Roca, Barbara Jensen Vorster, Deana Johnson, Megan Russell, Yujie Huang, and Shameer Patel for supporting MEP!



An entry in the Greatest Maasai Mara competition by Yujie Huang.

RESEARCH

Director's Update:

August was a busy month at MEP. Firstly, we re-collared Ivy on August 8 with her fourth collar. She's one of MEP's longest tracked individuals and also a notorious crop raider who has been continuously crop-raiding since we've tracked her, keeping our team based in Munyas on their feet with her almost nightly forays across the river. Recent results show that elephants can be categorized into three groups: those that rarely (if ever) crop-raid; those that do it sometimes; and those that are habitual raiders like Ivy.



Ivy being re-collared.

MEP was very happy to host Dr. Izhak Shafran from Google. Izhak has a background in artificial intelligence-based audio signal processing. We're hoping to collaborate with him in applying the latest AI methods to elephant movement analysis among several other conservation technology projects and will be visiting Google in early October.

The middle of August was spent revising the MEP strategy and research objectives for the next three years. Our core areas of focus continue to be poaching, human elephant-coexistence and habitat loss but moving towards a greater emphasis on researching habitat degradation within the GME.

We witnessed habitat degradation firsthand when collaring in the Nyakweri Forest on August 20. We attached a collar generously sponsored by Angama Foundation onto an elephant called Fitz, who's data will continue on where the elephants Lucy's and Tunai's collars left off and help us to map out elephant range and use within the Nyakweri Forest. However, we were dismayed to see the levels of charcoal production and deforestation. We'll get a chance to quantify these issues more fully during the upcoming forest dung survey in October which MEP has committed to helping in conjunction with KWS, World Wildlife Fund, Wildlife Conservation Society and the Narok County Government.



The successful collaring operation in the Nyakweri Forest.

At the end of the month we hosted Dr. Lydia Tiller from the elephant's and bees project. Lydia, who did her PhD on elephant conflict in the Transmara, was able to show us the locations of camera traps she placed along a series of 24 pathways that elephants use to climb the escarpment into the Transmara. She captured and classified 680,000 images of elephants and other wildlife and we're now working with Microsoft to develop a machine learning algorithm to automatically identify elephants in these camera trap photos. The data will give insight into the numbers of elephants moving in and out of the Transmara as well as group composition, which trails are most active, how long elephants stay up or down and how frequently they repeat their up-down escarpment movements.

Tracking Manager's Update:

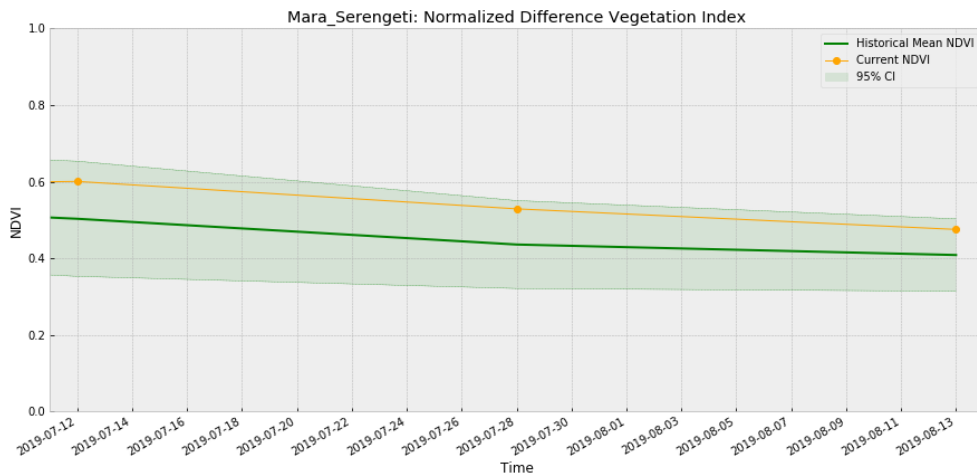
We had several elephants who were busy in August crop raiding nearby farms. Shorty crossed a geo-fence almost every day to crop raid and Fred, Hangzhou and Ivy were busy as well in August. Namunyak was visited by MEP rangers on the 11th and found a herd of more than 10 with her. Kiambi was also sighted in August with Limo. Chelsea and Caroline spent some time together in August.



Hugo spotted by MEP rangers while out on patrol.

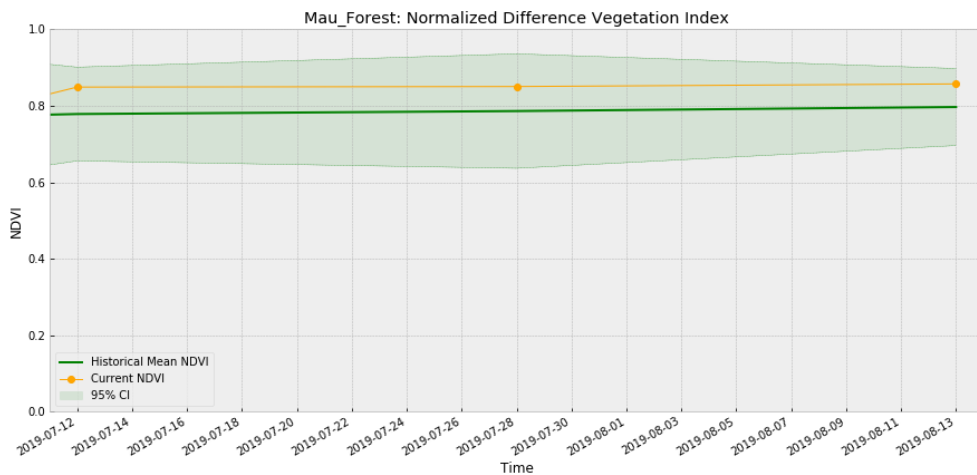
ENVIRONMENT

NDVI (Maasai Mara):



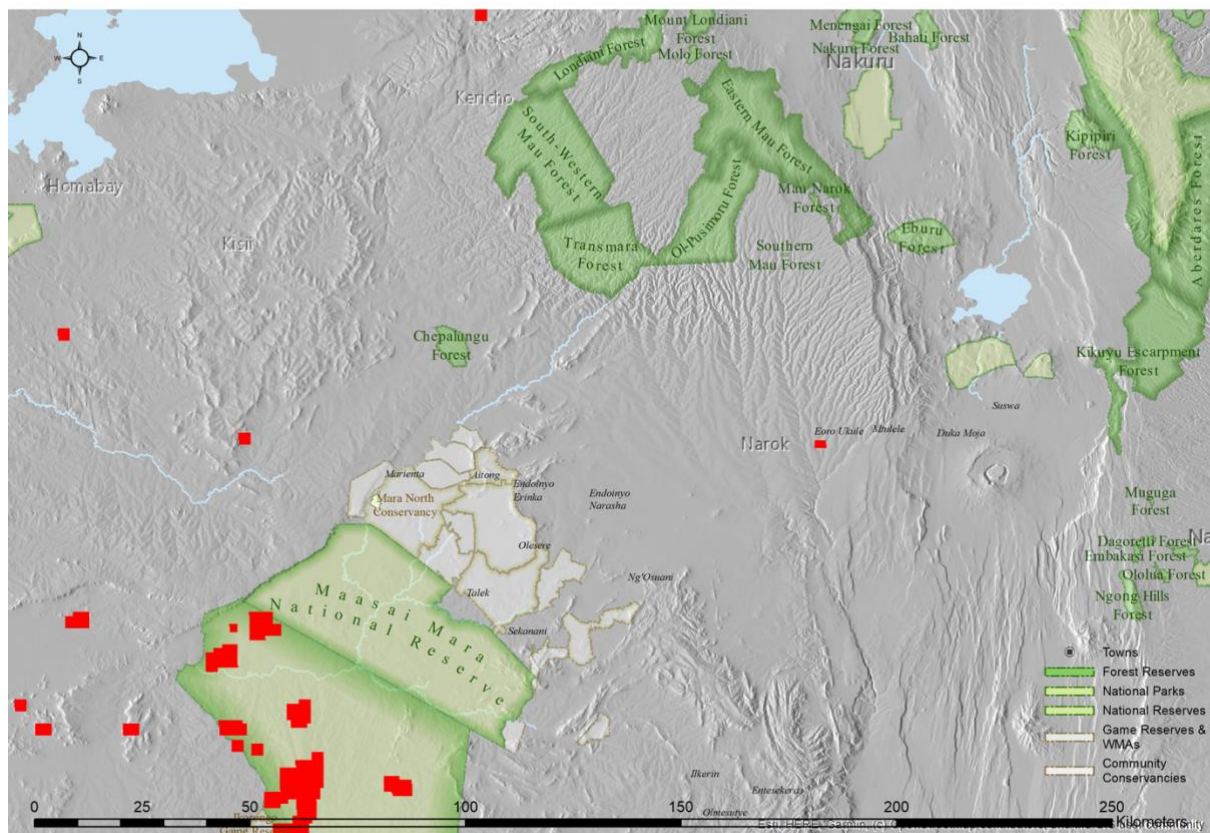
Normalized Difference Vegetation Index (NDVI) is a measure of plant photosynthetic activity. Higher NDVI indicates the plant is greener. The orange trendline shows the current value while the green area shows the 95% distribution of values centered around the green trendline from values measured back to February 2000.

NDVI (Mau Forest):



Normalized Difference Vegetation Index (NDVI) is a measure of plant photosynthetic activity. Higher NDVI indicates the plant is greener. The orange trendline shows the current value while the green area shows the 95% distribution of values centered around the green trendline from values measured back to February 2000.

Burn/Fire Areas:



Fire occurrence in August 2019. Red blocks indicate burn areas as measured by NASA's FIRMS dataset. Accessed through Google Earth Engine. The Serengeti had many fires in August but none in the Mara.